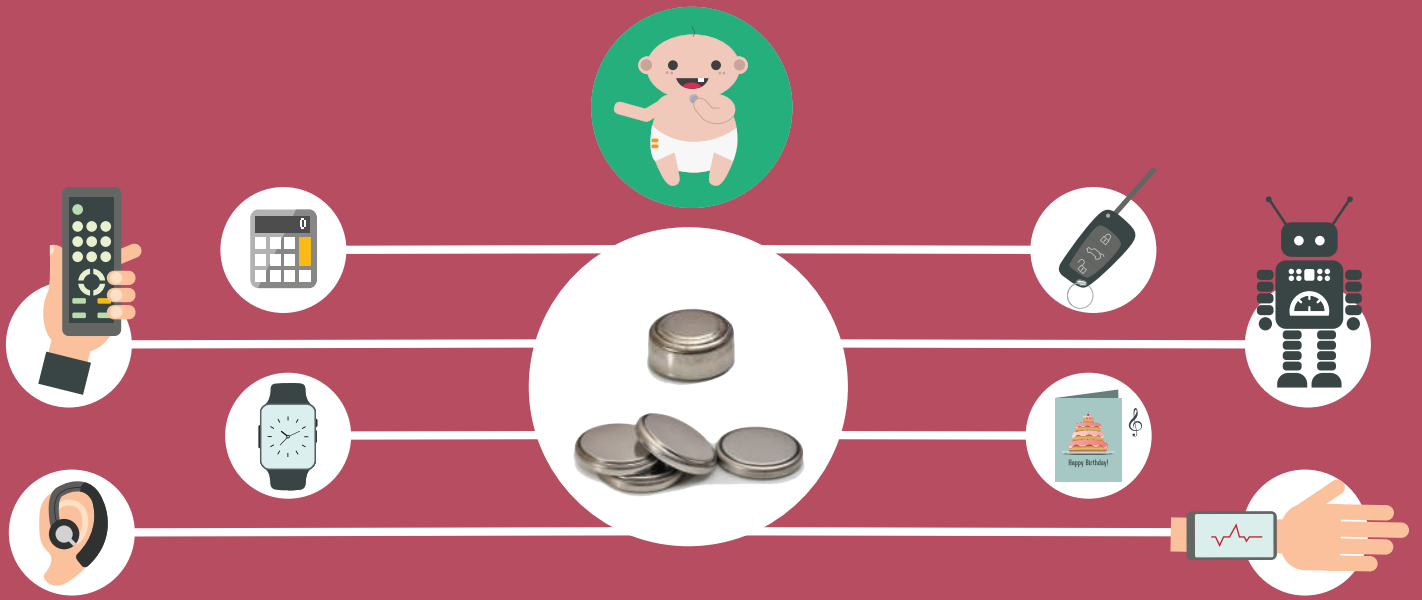


GUIDANCE FOR THE SAFE USE OF BUTTON BATTERIES

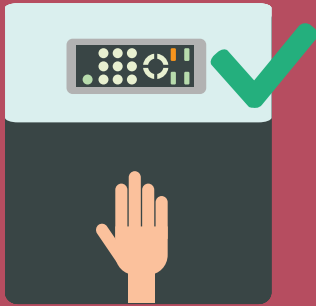
BUTTON AND COIN CELLS ARE BATTERIES SPECIALLY DESIGNED FOR SMALL PORTABLE APPLIANCES. THEIR MINIATURE SIZE AND ROUND SHAPE INCREASE THE RISK THAT THEY ARE UNINTENTIONALLY SWALLOWED BY CHILDREN.



HOW TO AVOID INCIDENTS?



The batteries can come out of appliances that the child is playing with or from batteries lying loose around the house. The shiny surface of the battery can be very appealing for a child who is exploring its environment.



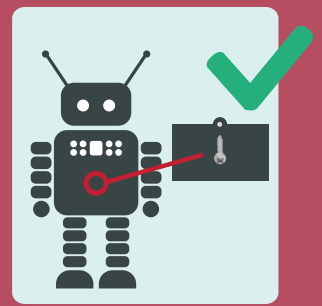
STORE SMALL BATTERIES AND SENSITIVE APPLIANCES OUT OF SIGHT AND REACH OF CHILDREN



DO NOT STORE SMALL BATTERIES TOGETHER WITH MEDICATION



MAKE SURE THAT CHILDREN CANNOT ACCESS THE BATTERIES WHICH REMAIN IN OPEN PACKS



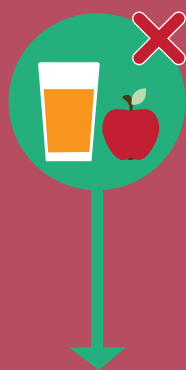
CHECK THAT THE BATTERY COMPARTMENT OF ANY PRODUCT PRESENT IN YOUR HOUSE IS SECURELY CLOSED AND CANNOT BE ACCESSED BY CHILDREN

WHAT TO DO IN CASE OF SUSPECTED INGESTION?

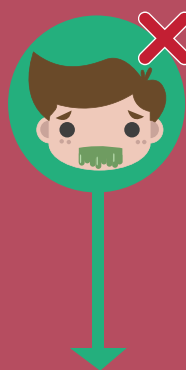
In most cases, the battery will pass through the body naturally without causing any harm. But the risk is that it stays stuck in the food pipe. This can be very dangerous and, at worst, even fatal.



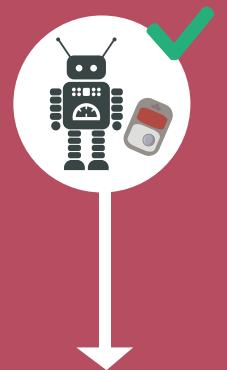
SEEK IMMEDIATE MEDICAL ATTENTION AT A HOSPITAL EMERGENCY ROOM



DO NOT LET YOUR CHILD EAT OR DRINK UNTIL AN X-RAY CAN DETERMINE IF A BATTERY IS PRESENT



DO NOT INDUCE VOMITING



TAKE THE APPLIANCE CONTAINING THE BATTERY OR THE ORIGINAL PRODUCT PACKAGING WITH YOU TO HELP THE DOCTOR IDENTIFY THE BATTERY TYPE AND CHEMISTRY